

Kansas Charolais Association



2010-2011 Membership Directory

Schrader Ranch

"Come and Have a Look."

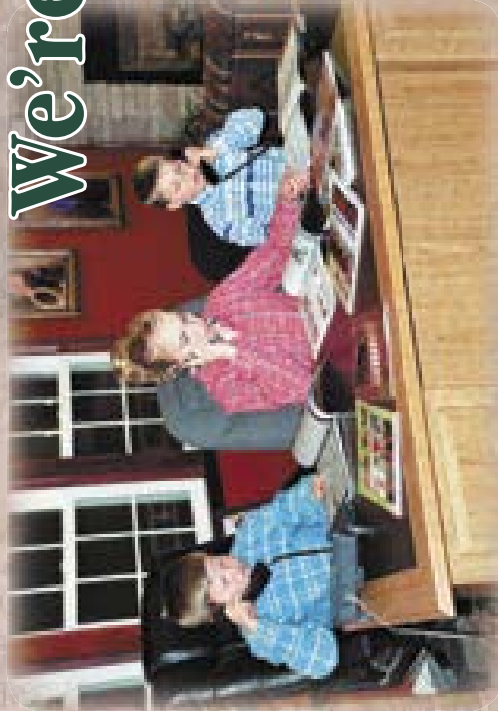
Charolais & SimAngus
Hybrids

Females, Bulls,
Steers & Embryos
for sale by private
treaty anytime!
Annual SimAngus
Bull Sale - 3rd
Tuesday in March.

Schrader Ranch
Derek Schrader & Anna
Spencer & Laci Schrader
Weston & Josi
2118 Oxbow Rd
Wells, KS 67467
785-488-2135
schrader@twinvalley.net
www.schraderranch.com



We're listening ... that's why we're growing!



Over 150 progressively bred Angus, Red Angus and Charolais bulls available exclusively by private treaty at the ranch. These bulls are the result of producer input and the best genetics available. We accomplish this with planned matings that yield acceptable birth weights, superior growth and an easily managed blend of maternal and carcass genetics.

Proud to be a
founding member of
**U.S. PREMIUM
BEEF**
"We are Qualified Seedstock Suppliers."

HARMS PLAINVIEW RANCH

Registered
Angus
Red Angus
Charolais



"Your
Partner
in
Progress"

Mark and Kim Harms
2528 250th Street
Lincolnville, KS 66858
(620) 924-5544
Email: hprbulls@tctelco.net
www.HARMSRANCH.com



Maternal Power Produces Herd Bulls!



0308 + 19 Milk
Rancher x FWT Bar 932



2015 + 13 Milk
9108 x Reflection x 828



4023 + 7.0 CE + 10.9 MCE
Wind x Tundra x Quinstar



**2010 National Western
Reserve Grand Pen of Heifers**
Full sisters – Rancher x 4023



452 + 30 WW + 54 YW
Wind x 066 x Sir T 8007



2084 -0.3 BW
Prime Time x Justification



2030 +55 YW
Wind x Ease 2078



0058 + 18 Milk
Windstorm x Performer



0013 Great Numbers!
Wind x Mac 112 x Foundation



Miss HCR Randi 4050
Link Charolais, Center, TX, selected
this Rancher daughter as "Choice of the
Cow Herd" from our 2010 sale.
Thanks Gilbert!

*Our thanks to the many Charolais breeders from across the country
for expressing interest in our 31st Annual Bull Sale, April 6th.*

- Schmidt Cattle Co., Gordon, Neb., selected the high-selling bull, HCR Silver Prime 9035 Pld, a son of Doc Silver.
- John Allison, Ky., selected HCR Silver King 9070 Pld, a son of Doc Silver, as the second high.
- Bar D Livestock, Stockton, Kan., selected HCR Rancher's Edge 9004, a son of HCR Extra Edge 6011 Pld, as the third high.
- RCG Cattle Dynasties, Tompkinsville, Ky. selected HCR Extra Silver 9044 Pld, a son of HCR Extra Edge 6011 Pld, as the fourth high.

 **Hubert
Charolais
Ranch**

510 Maple Ave.
Oakley, KS 67748
David & Shelby Hubert
(785) 672-3528
(785) 672-2540 cell

Fancy Creek Charolais

"since 1968"

Discover the possibilities!



DOB: 2-8-09

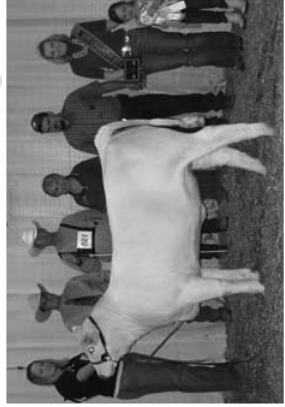
Sired by PF EL Duke 9021

High Selling Charolais Bull 2010
Nebraska Cattlemens Classic

See our entries & consignments

- * Kansas State Fair
- * Shades of Red & White Show Calf Sale, Clay Center, KS
- * Nebraska Cattlemen's Classic, Kearney, NE
- * Kansas Bull Test, Beloit, KS

www.fancycreekcharolais.com



DOB: 2-8-09

Sired by Schurrtop HCR Rancher

Reserve Champion Charolais Female
2009 Kansas State Fair

- * 2010 Calves Sired By:
- * PF EL Duke 9021
- * Schurrtop HCR Rancher
- * Thomas Mr. Firewater
- * TR Mr. Firemaker
- * ASC Eliminator 032
- * HCR Primetime 2072



DOB: 1-30-08

Sired by ASC Eliminator 032

2009 Kansas Bull Test
* Top gaining bull at 5.1 lbs./day and high-seller
* 2nd high gainer at 5 lbs./day

2010 Kansas Bull Test
* High selling bull

Fancy Creek Charolais
Purebred Charolais Since 1968
Don & Charlotte Olsen and family

17050 Turtle Creek Blvd. • Randolph, KS 66554
Home: 785-363-2519 • Cell: 785-313-2099

fancycreek@kansas.net

HIGH PLAINS / MIDWEST AG
JOURNAL™

P.O. Box 760 • 1500 E. Wyatt Earp • Dodge City, Kansas 67801
(800) 452-7171 ext. 1860 • www.hpj.com

Rod Swafford • Western Representative • 620-227-1860 Office • 620-338-7244 Cell

Guy Peverley • Eastern Representative • 785-456-9911 Office • 785-456-4390 Cell

Service, Science, Success



29CH0205 DCR **SOLUTION** W13
EC NO DOUBT 2022 P x BEM BULLDOZER 51M

*Contact your local ABS Representative
or call 1-800-ABS-STUD today!*



©2010 ABS Global, Inc.
1525 River Road, DeForest, WI 53532
Phone: 1-800-227-7883
Fax: 608-846-6392
www.absglobal.com

District Sales Manager

Sandra Utter
(620) 672-1881
sutter@absglobal.com

South Central

Lena Hommertzhaim,
Andale
(316) 444-2247

Derek Hubbard,
Protection
(620) 770-9071

Southeast

Jeff Cleland,
Arma
(620) 249-1271

Southwest

Brady Larson,
Sharon Springs
(785) 821-1580

Northwest

Larri Lewis,
Grinnell
(785) 824-3465

Northeast

Brian Beying,
Leavenworth
(913) 651-8068

Central

John Fisher,
Buhler
(620) 543-2890

Derrick Schlegel,
Alexander
(785) 731-5221

North Central

Andy LeDoux,
Agenda
(785) 527-3188

Lori Fink,
Randolph
(785) 293-5106

Jackie Boden,
Waldo
(785) 445-8153

East Central

Ryan Michaelis,
Paxico
(785) 456-4677

Trey Hinkson,
Cottonwood Falls
(620) 273-8421



First Quality then Quantity



Kyla, Kendal, Kurtis, and Katy Clawson
146 Rd 140
Salanta, KS 67870
Phone: (620)657-2949



**Doug & Kim
Harris**
620-368-4792



Show
Prospects

Harris Livestock Farms
Hepler, Kansas



SUN VALLEY

EMBRYO TRANSFER
3104 W. Pleasant Hill Rd.
Salina, KS 67401
(785) 825-7600



GLENN ENGELLAND
DVM
Kristi Kern
DVM

**EMBRYO TRANSFER
BOVINE REPRODUCTION
SERVICES**

Location: I-70 Halstead Exit 249
 $\frac{1}{2}$ Mile North, $\frac{1}{8}$ Mile East



Suther's
Nutrition Management People

Quality
Consistency
Availability

*Specializing in all your nutrition and cattle
marketing needs!*

**For More Information Contact:
Spencer Schrader, Beef Marketing Specialist
2118 Oxbow Rd
Wells, KS 67467
785-488-7204**

**1-800-633-4138
Frankfort, KS**

J-S Ranch



WC Mickey Mantle 9037PLD

Select Females & Bulls Available

Jim, Carolyn, Mike Schwarz

17230 SW 84th Street

Sedgwick, KS 67135

(316) 830-2297



**LAURA'S
LEAN BEEF™**
laurasleanbeef.com

Take a look at Laura's Lean Beef!

For natural Charolais and Charolais Cross calves, finished cattle and bulls,
they're committed to paying family farmers Full Value. Call 1-800-ITS-LEAN!

Kansas Charolais Association Member Listing

Map Code

B9	1	A&D Ranch, Manhattan
C10	2	Barrett Cattle Company, Grantville
B6	3	Brent Charolais, Alton
B9	4	Bruna Beef Genetics, Barnes
F8	5	Carter Charolais, Valley Center
D12	6	Chase Charolais, Spring Hill
F3	7	4KC Clawson Ranch, Satanta
B6	8	Bar D Ranch, Stockton
F12	9	Edge Charolais, Pittsburg
B9	10	Fink Beef Genetics, Randolph
D7	11	Fitzpatrick Charolais, Sterling
D9	12	Harms Plainview Ranch, Lincolnville
F12	13	Harris Livestock Farms, Hepler
C3	14	Hubert Charolais Ranch, Oakley
D8	15	2K Charolais, McPherson
C9	16	Kanza Cattle, Chapman
D3	17	Darla Strnad Lewis, Leoti
F12	18	M&M Charolais, Perry, OK
E7	19	Merrimac Charolais, Nickerson
G11	20	McNickle Charolais Ranch, Cherryvale
B11	21	TLC Farms, Easton
B9	22	Fancy Creek Charolais, Randolph
A2	23	Raile Charolais Farm, St. Francis
C5	24	Smoky Hill Charolais, Hays
A8	25	Myron Runft Charolais, Belleville
D8	26	Wooden Cross Cattle Co., Hillsboro
C8	27	Schrader Ranch, Wells
C5	28	Schumacher Trust Charolais, Hays
E8	29	J Bar S Ranch, Sedgwick
B10	30	Sheppard Ranch Charolais, Olsburg
C6	31	Bar S Ranch, Paradise
F9	32	Vaughan Family Ranch, Derby

Kansas Charolais Members

A&D Ranch
Dave, Anita, Drew & Amy Nichols
6055 Lake Elbo Rd
Manhattan, KS 66502
785-776-4331

Barrett Cattle Co.
Gene & Anna Barrett
2563 Douglas Rd
Grantville, KS 66429
785-286-1891
barrettcattle@msn.com

Brent Charolais
Matt Brent
22 Co 657 Ave
Alton, KS 67623
785-984-2213

Bruna Beef Genetics
Lance Bruna
2788 14th Rd
Barnes, KS 66933
785-33-3020
lbruna@brunabeef.com
www.brunabeef.com

Carter Charolais
Kenny Carter
1121 E. 93rd St. N
Valley Center, KS 67147
316-737-5911
kennyvcks@aol.com

Chase Charolais
Lonnie Chase
20505 Woodland
Springhill, KS 66083
913-592-3898

4KC Clawson Ranch
Kenby & Lana Clawson
Kyla, Kendal, Kurtis, & Katy
146 140th Rd
Satanta, KS 67870
620-657-2949

Bar D Ranch
Damion Dix
710 N 2nd
Stockton, KS 67669
785-425-7066

Edge Charolais
Harley Edge
721 S. 270th St
Pittsburg, KS 66762
620-231-5792 home
620-249-5708 cell

Fink Beef Genetics
Galen, Lori, & Megan Fink
15523 Tuttle Creek Blvd
Randolph, KS 66554
785-293-5106 home
785-532-9936 Galen's cell
785-532-8171 Lori's cell
finkbull1@twinvalley.net
www.finkbeefgenetics.com

Fitzpatrick Charolais
Brett Fitzpatrick
20536 Cedar Bluff Road
Fayetteville, AR 72703
479-263-7581

Kanza Cattle
Stan, Lori, Audrey & Wade Hambright
1853 2700 Ave
Chapman, KS 67431
785-922-7063
kanzacattlevines@hotmail.com
www.kanzacattle.com

Harms Plainview Ranch
Mark & Kim Harms
2528 250th St
Lincolnton, KS 66858
620-924-5544
hprbulls@tctelco.net
www.HARMSRANCH.com

Harris Livestock Farms
Doug & Kim Harris
Box 133 301 N. Oak
Hepler, KS 66746
620-368-4792
kaharris1965@yahoo.com

Hubert Charolais Ranch
David & Shelby Hubert
510 Maple
Oakley, KS 67748
785-672-3528

Kansas Charolais Members

2K Charolais
Ken Krehbiel
726 18th Ave
McPherson, KS 67460
620-345-8319

Darla Strnad Lewis
876 N County Rd 11
Leoti, KS 67861
620-375-2876
rdlewis@wbsnet.org

M&M Charolais
Mary Malzahn, Owner
Kevin Wiley, Manager
805 N. 25th
Perry, OK 73077
580-572-2555 Barn
mmcharolais@sbcglobal.net

Merrimac Charolais
Gene & Mary McKee
7901 West 82nd Ave
Nickerson, KS 67561
620-422-3442

McNickle Charolais Ranch
Larry & Barbara McNickle
135 14000 Rd
Cherryvale, KS 67335
620-336-2048

TLC Farms
Curtis, Taylor & Logan Ohlde
21430 Spruce Rd
Easton, KS 66020
913-772-2697 home
913-683-5910 cell
curtis@tlcfarms.net
www.tlcfarms.net

Fancy Creek Charolais
Don & Charlotte Olsen
17050 Tuttle Creek Blvd
Randolph, KS 66554
785-363-2519 home
785-313-2099 cell
fancycreek@kansas.net

Raile Charolais Farm
Cliff Raile
1965 Co Rd 7
St. Francis, KS 67756
785-332-2794

Smoky Hill Charolais Farm
Maurice Rohr
747 240th Ave
Hays, KS 67601
785-432-0560 Maurice
785-432-1107 Mark
lhrbulls@ruraltel.net
www.lhrbulls.com

Myron Runft Charolais
1460 Penn Rd
Belleville, KS 66935
785-527-5047

Wooden Cross Cattle Co.
Merle, Marolyn & Maci Schlehuder
557 190th Rd
Hillsboro, KS 67063
woodencross@fhrd.net
www.woodencrosscattle.com

Schrader Ranch
Derek Schrader & Anna
Spencer, Laci, Weston, & Josi Schrader
2118 Oxbow Rd
Wells, KS 67467
785-488-2135
schrader@twinvalley.net
www.schraderanch.com

Schumacher Trust Charolais
Mel & Norma Schumacher
1855B 250th Ave
Hays, KS 67601
785-625-6829
785-625-2620 Gerri
heygerri@ruraltel.net

J Bar S Ranch
Jim, Carolyn, & Mike Schwarz
Casey & Kelli Rump
17230 SW 84th St
Sedgwick, KS 67135
316-830-2297

Kansas Charolais Members

Sheppard Ranch Charolais
Todd & Charlene Sheppard
Zach & Eli
15755 Hwy 13
Olsburg, KS 66520
785-457-2164
sheppard@bluevalley.net

Bar S Ranch
Ken & Pat Stielow
David & Stephanie Dickerson
5302 182nd St
Paradise, KS 67658
785-998-4335 Ken
785-998-4386 David

Vaughan Family Ranch
Jerry Vaughan
14630 E 44th St. S
Derby, KS 67037



KANSAS CHAROLAIS ASSOCIATION



2118 OXBOW RD
WELLS, KS 67467

785-488-2135

SCHRADER@TWINVALLEY.NET

WWW.KANSASCHAROLAIS.COM

Kansas Charolais Association

Officers & Directors

President.....Don Olsen, 785-363-2519

Vice President.....Maurice Rohr, 785-625-6490

Secretary/Treasurer....Laci Schrader, 785-488-2135

North Director.....Todd Sheppard, 785-457-2164

South Director.....Doug Harris, 620-368-4792

East Director.....Curtis Ohlde, 913-772-2697

West Director.....Open

At-Large Director.....Gene Barrett, 785-286-1891

Kansas State Fair

Breed Representative...Jim Schwarz, 316-830-2297

AICA/Charolais Journal.....816-464-5977

AICA Field Rep.....Kristian Rennert, 308-440-9463

KCA Membership Application

Ranch Name _____

Owner's Name _____

Address _____

City _____ State _____ Zip _____

Telephone Number(s) _____

E-Mail _____

*Send completed application and \$50 annual dues to Kansas Charolais Assoc.,
c/o Secretary, Laci Schrader, 2118 Oxbow Rd, Wells, KS 67467*

Kansas Junior Charolais Association Members

Ella Barrett
Payden Barrett
2563 Douglas Rd
Grantville, KS 66429
785-286-1891

Codie Beerbower
310 W. Farlington
Hepler, KS 66746
620-368-4106

Katy Clawson
Kendal Clawson
Kurtis Clawson
Kyla Clawson
146 140th Rd
Satanta, KS 67870
620-657-2949

Ethan Dickerson
Grady Dickerson
Jayce Dickerson
18344 Fairport Rd
Paradise, KS 67658
785-998-4386

Calvin Dix
2730 J Rd
Woodston, KS 67675
785-994-6584

Megan Fink
15523 Tuttle Creek Blvd
Randolph, KS 66554
785-293-5106

Elizabeth Forsyth
1009 1st Rd
Abilene, KS 67410
785-388-2541

Wade Hambright
1853 2700 Ave
Chapman, KS 67431
785-922-7063

Cade Harms
2528 250th Street
Lincolnville, KS
66858
620-924-5544

Hannah Harris
PO Box 133 301 N.
Oak
Hepler, KS 66746
620-368-4792

Nikki Harris
249 Hwy 3
Hepler, KS 66746
620-368-4792

Allison Jones
8921 Univer. Pk. Rd
Manhattan, KS 66503
785-293-5277

Drew Krehbiel
Riley Krehbiel
2435 N. Marquette
Kingman, KS 67068
620-532-5426

Claire Krehbiel
Wyatt Krehbiel
801 E. Irish Creek Rd
Hutchinson, KS 67501
620-459-7236

Augusta Marston
1838 27 Ave
Canton, KS 67428
620-628-7902

Lane Minihan
312 Railroad St
Wheaton, KS 66521
785-396-4513

Dustin Nattier
8029 S. Hillside Rd
Newton, KS 67114
316-283-6029

Caleb Obermeyer
1346 Eagle Rd
Marysville, KS 66508
785-744-3464

Logan Ohlde
Taylor Ohlde
21430 Spruce Rd
Easton, KS 66020
913-772-2697

Jaid Runft
Mason Runft
Payton Runft
975 80 Rd
Scandia, KS 66966
785-335-2549

Maci Schlehuber
557 190th Rd
Hillsboro, KS 67063
620-381-1712

Hadley Schotte
Taylor Schotte
Tessa Schotte
778 Eagle Rd
Marysville, KS 66508
785-774-3373

Anna Schrader
16915 Hwy 177
Alta Vista, KS 66834
785-499-6809

Weston Schrader
2118 Oxbow Rd
Wells, KS 67467
785-488-2135

Eli Sheppard
Zach Sheppard
15755 Hwy 13
Olsburg, KS 66520
785-457-2164

Clay Toews
4513 N. Sandhill Rd
Burrton, KS 67020
620-747-0843

Kansas Junior Charolais Association



2010 State Show Participants



2010-2011 KJCA Officer Team

Officers & Directors

President.....	Kendal Clawson, Satanta
Vice President.....	Megan Fink, Randolph
Secretary.....	Jaid Runft, Scandia
Treasurer.....	Elizabeth Forsyth, Abilene
North Director.....	Zach Sheppard, Olsburg
South Director.....	Kurtis Clawson, Satanta
At-Large Director.....	Codie Beerbower, Hepler
At-Large Director.....	Katy Clawson, Satanta
Reporter.....	Eli Sheppard, Olsburg
Historians.....	Payden & Ella Barrett, Grantville
Advisors.....	Galen Fink & Spencer Schrader

KJCA Membership Application

Name _____

Address _____

City _____ State _____ Zip _____

Telephone Number(s) _____

E-Mail _____

*Send completed application and \$10 annual dues to:
Elizabeth Forsyth, 1009 1st Rd Abilene, KS 67410*

COMPLETE EMBRYO TRANSFER SERVICE

*Collection,
freezing, splitting
and transfer of
embryos*



*Donor
maintenance and
management*



(785) 457-3336
fax (785) 457-3335

ccgnfarm@bluevalley.net

Cross Country Genetics North, Inc.

Kirk Gray, DVM, MS • Clay Breiner, DVM

8855 Michaels Road • Westmoreland, KS 66549

12055 W. Cooksey Rd. • Crescent, OK

Bar S Ranch |

Ken and Pat Stielow

bar_s@gorhamtel.com

785-998-4335

785-483-9733 Ken's cell

David and Stephanie Dickerson

Stephanie@gorhamtel.com

785-998-4386

785-483-1454 David's cell

www.barsangusranch.com

SHEPPARD RANCH CHAROLAIS

TODD, CHARLENE, ZACH AND ELI SHEPPARD
15755 HWY 13, OLSBURG, KANSAS 66520
PH: 785-457-2164 Email:CSHEPPARD@BLUEVALLEY.NET



FINK VANESSA 7804 3551 GG (GAIN & GRADE x O66) (AND ELI)

Progeny Proven Charolais Genetics **ACCELERATED GENETICS**

See these and others in our line-up at
WWW.ACCELGEN.COM

Schurrtop HCR Rancher - 14CH5009

HCR Institute - 14CH5015

NWMSU Platinum - 14CH5017

Contact your local Accelerated representative:

Shawn Roy, Palco 785-737-3107

Mark Rohr, Hays 785-432-1107

800-451-9275 / info@accelgen.com

www.accelgen.com



Innovation Breeds Excellence®

Where is *your* breeding program going?

The road to profitability

is often a long one, so let our professional marketing staff put you on the fast track. We offer a full range of marketing and promotional services that will make a difference on your bottom line.

- Print advertising
- E-mail broadcasts
- Ring service
- Professional photography and design

Andrew Sylvester • (785) 456-4352
andrew@kla.org • www.kla.org

Kansas
STOCKMAN



FARMTALK

Weekly Regional Agricultural Newspaper



PUREBRED OR COMMERCIAL CATTLE FOR SALE?

**"Reach 10,000 Plus Farmers & Ranchers Weekly
In Our Purebred Roundup Or Classified Sections!"**

For A Free Sample Copy Or Advertising Rates - Call Toll Free:

1-800-356-8255

620-421-9450

620-421-9473 Fax

P.O. Box 601, Parsons, Kansas 67357

farmtalk@terraworld.net

www.farmtalknewspaper.com

Foundation Females



Lady Jupiter C450
F695121

Skymont Miss 5209
F737075



TWJ Sprinkles 611
FFF944901



MJR Smoky International 903

You Herd Sire



"Annual Bull Sale"
First Sunday in March

Females for Sale Private Treaty sired by:
LT Bluegrass • Schurrtop Dominion • LHD Flawless • "Sam" (FWT Bar 951)
"Semen & Embryos Available at all Times
Visit our web-site for more information at www.LHRBULLS.com

MJR
Smoky Hill Charolais Farm

Smoky Hill Charolais Farm
747 240th Avenue • Hays, KS 67601
785-625-6490
Maurice Rohr • 785-432-0560
Mark Rohr • 785-432-1107
lhrbulls@ruraltel.net
www.LHRBULLS.com

SCHUMACHER TRUST CHAROLAIS AND RED ANGUS A PROGRAM YOU CAN COUNT ON...



BEING IN BUSINESS SINCE 1961...WE HAVE ESTABLISHED A SOLID PROGRAM, KEEPING UP WITH ALL OF THE CHALLENGES AND DEMANDS OF THE CATTLE INDUSTRY. WE HAVE SOLID GENETICS OF HIGH PERFORMANCE CATTLE OFFERED PRIVATE TREATY ANNUALLY. VISITORS ARE ALWAYS WELCOME.

SELLING:
CHAROLAIS
RED ANGUS
GOLD F1'S



MEL AND NORMA SCHUMACHER
1855B 250TH AVENUE
HAYS, KS 67601

FOR INFORMATION CALL
GERRI SCHUMACHER
(785) 625-2620 OR 785 623-1721

3 1/2 MILES NORTH OF HAYS ON HIGHWAY 183

Put a little
TLC
in your
herd!

Donor Dams



Fink Shandy 7718

Finks Shandy Western Spur x 066 x 9108 (Shandy), currently being flushed.

*Congratulations
Taylor!*



MJB Ulrika
2010 National South
Devon Champion
Female



Miss HCR Reflection 1043 LT

Finks Vanity 6881 Gain & Grade x 9108

ET's coming by Grid Maker & Bluegrass.

Finks Pride 6871 Gain & Grade x 066 x Mac 112

ET's coming by Grid Maker & Bluegrass.

JWK Victoria H149 Destinction x 914

ET's by 066 & RC Rainmaker.

We are heavily using
Embryo Transfer along
with proven sires to
provide consistency for
your next calf crop.

 **TLC**
F A R M S

Curtis, Taylor & Logan Ohlde
21430 Spruce Rd. • Easton, KS 66020
(913) 772-2697 H- (913) 683-5910 M
(913) 682-8663 F
cwohldecattleco@aol.com
www.tlcfarms.net

Fink Beef Genetics

TRIED & TRUE.

"We have been buying Fink bulls for the past 7 years and each year they never cease to amaze me. Our bulls have to be tough to travel well here in West Texas, in the Davis Mountain area, where jagged lava rock covers much of the area. And they definitely are that, tough! We have over 25 Fink bulls that are strong, have an easy disposition and really produce tremendous calves. In 10-inch rainfall country, they work for a living doing their job where we run just a few cows per section.



Proven performance simply states the experience we have had with Fink bulls."

STUBBS RANCH, ANDY & JANNA STUBBS, ALPINE, TEXAS

Selling 600 Black Angus, Charolais and Char-Angus bulls nationwide at annual sale and through pre-contracted sales.

Annual bull sale last Wednesday in October.

October 27, 2010

Guarantees and customer marketing services unmatched.

Hundreds of references available.

Megan, Lori & Galen Fink

15523 Tuttle Creek Blvd. Randolph, Kansas 66554

Ph/Fax: 785-293-5106 Galen: 785-532-9936 Lori: 785-532-8171

finkbull1@twinvalley.net

www.finkbeefgenetics.com

Commercial Services Representatives

Barrett Broadie: 620-635-6128 & Gene Barrett: 785-224-8509

Florida Reps

Charles Robert Stevens: 863-781-1410 & Tommy Mann: 863-673-1798



Beef Genetics